

Hanging Instruction Non-Woven Wallpaper

INFOS

Recommended tools scissors, pencil, ruler, level, utility knife, sponge, bucket, paste brush or roller, wallpaper smoothing roller

Wall surface > Your wall is ready if it is smooth, clean and free of oil-based paint, latex paint or wallpaper residues.

> If your wall is freshly painted, wait 3 weeks before hanging.

> We recommend a white primer coating for dark walls.

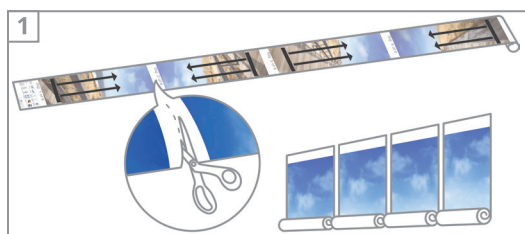
Notes > Don't soak non-woven wallpapers in advance, paste the wallpaper glue directly onto the wall.

> Avoid strong heating and open windows.

> The protruding ends of the wallpaper are cut off to fit any wall - and even uneven ceilings.

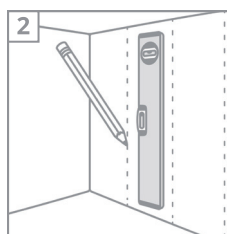


INSTRUCTIONS

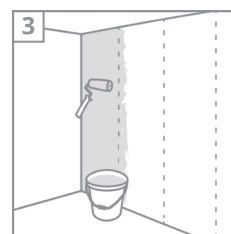


1
Pretty wallpaper!
Good choice. :)
Now roll up your sleeves and let's get started: Cut along the crop marks.

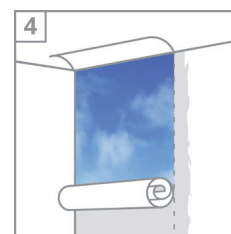
Place the wallpaper, with the label upwards, in the correct order on the floor. Every second sheet is upside down. Close windows and work at room temperature.



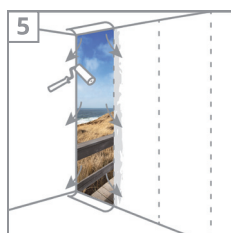
2
Your wall is ready if it is smooth, clean and free of oil-based paint, latex paint or wallpaper residues. Draw vertical guidelines.



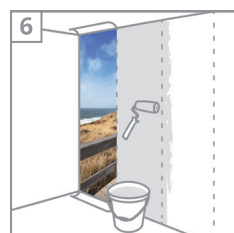
3
Stir the wallpaper paste in cold water and leave it for 30 minutes. Evenly spread the paste just above the 1st pencil mark.



4
Now start hanging the wallpaper.



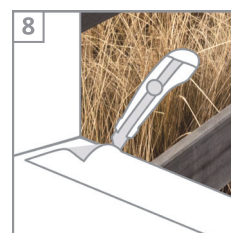
5
Grab your roller and smooth out the wallpaper from center sideways and top to bottom.



6
Repeat 3 - 5.



7
Align the edges seamlessly and non-overlapping. Wipe away leaking glue with a damp sponge.



8
After hanging the whole wallpaper cut off the protruding ends.



9
Done! Allow your wallpaper to dry slowly with closed windows.