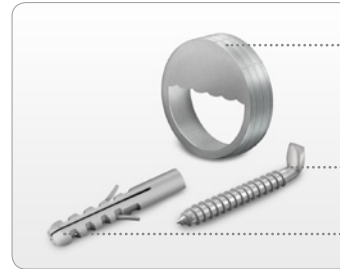


MONTAGEANLEITUNG GARDEROBEN

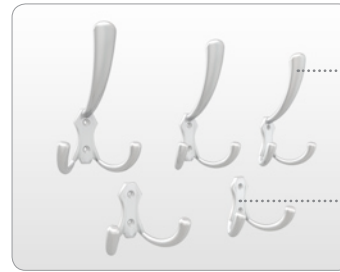
INSTALLATION INSTRUCTION COAT RACKS



Metallringaufhängung (vormontiert)
metal hanger ring (pre-mounted)

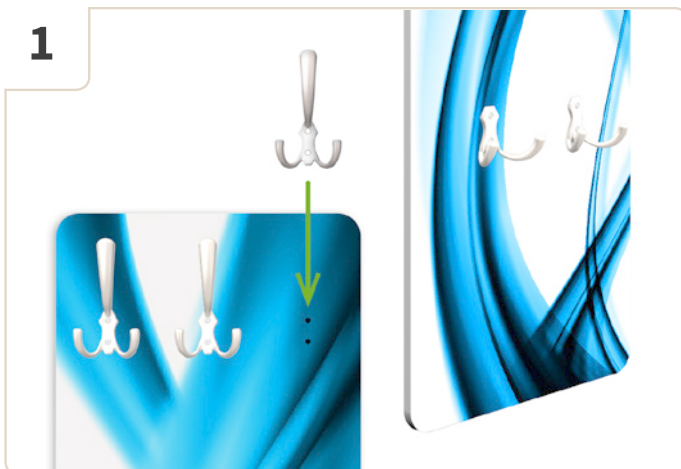
Hakenschraube
clip bolt

Dübel
dowel



Hut- und Kleiderhaken inkl. Schrauben
hat and coat pegs screws included

Taschenhaken inkl. Schrauben
bag pegs, screws included



1
Schraube die Hut- und Kleiderhaken sowie die kleineren Taschenhaken an den vorgebohrten Löchern der Garderobe fest.
Screw the hat and coat pegs, as well as the smaller bag pegs into the pre-drilled holes on your coat rack.



2
Miss den Abstand der Metallringaufhängung und zeichne zwei Markierungen an die Wand.
Measure the distance of both metal hanger rings and mark it on the wall.

Measure the distance of both metal hanger rings and mark it on the wall.



3
Bohre zwei Löcher in die Wand und setze Dübel und Hakenschrauben ein.
Drill two holes into the wall and insert your dowels and clip bolts.



4
Hänge nun die Garderobe an die Wand. Der mitgelieferte Universaldübel ist für Beton, Vollziegel, Hohlziegel, Holz, Spanplatten oder Leichtbauwände geeignet.
Now hang your coat rack to the wall. The universal dowel which is included in the delivery is applicable for concrete, solid brick, tubulus, wood, chipboard or lightweight walls.

Now hang your coat rack to the wall. The universal dowel which is included in the delivery is applicable for concrete, solid brick, tubulus, wood, chipboard or lightweight walls.